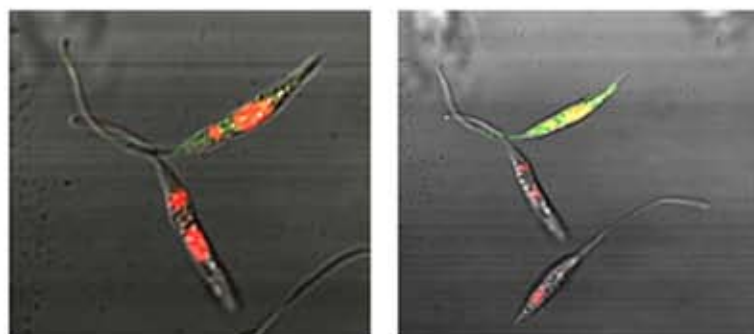


Studies of cell cycle related proteins of *Leishmania* parasites



Thesis submitted to Jadavpur University
for the Degree of
Doctor of Philosophy (Science)
2008

Santanu Roy

Crystallography & Molecular Biology Division
Saha Institute of Nuclear Physics
I/AF Bidhannagar, Kolkata - 700 064

Contents

Synopsis	1-2
Introduction	3-41
Aims and Objectives	42-43
Materials and Methods	44-57
Results	58-75
Discussions	76-79
Appendix	80
References	81-106